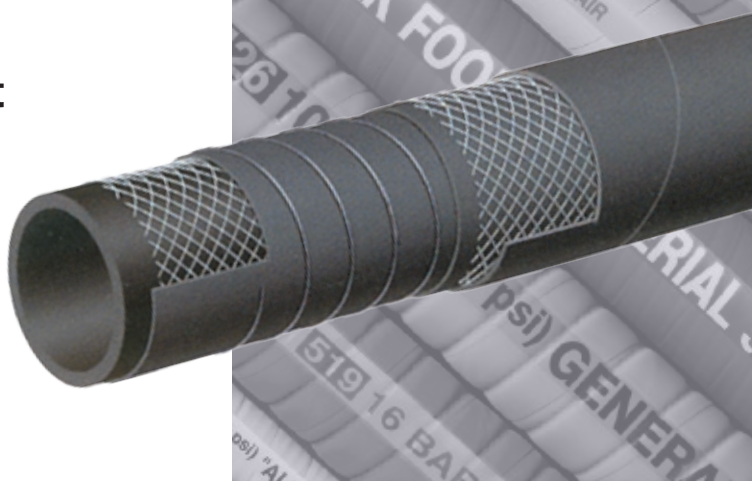


T614AA

150 PSI Hot Tar & Asphalt S & D Hose



Applications:

Hot tar and asphalt suction and discharge service.

Cover:

Black CSM – abrasion, ozone and hot tar resistant.

Reinforcement:

High tensile textile cords with steel helix wire.

Tube:

Black NBR – hot tar and asphalt resistant.

Working Pressure:

10 Bar (150 PSI)

Temperature Range:

-4°F (-20°C) to 356°F (+180°C)

Branding:

ALFAGOMMA – ITALY T614 10 BAR (150 PSI) HOT TAR AND ASPHALT (on red stripe)

Standard Length:

100 feet

Nominal Specifications

Series	ID (in.)	ID (mm)	OD (in.)	OD (mm)	Wall Thickness (mm)	Max Rec. WP (PSI)	Vacuum HG (in.)	Min. Bending Radius (in.)	Weight (lbs./ft.)
T614AA200	2	51	2.72	69	9	150	30	10	1.64
T614AA300	3	76	3.78	96	10	150	27	15	2.69
T614AA400	4	102	4.80	122	10	150	27	20	3.57

COUPLING SUGGESTIONS

Permanently attached couplings are suggested for assemblies.